

Quick User Guide – HIKVision NVR camera recorder


CCTV – Current System

6.1.1 Playing Back by Channel

Purpose:

Play back the recorded video files of a specific channel in the live view mode. Channel switch is supported.

● **OPTION 1:**

Choose a channel in live view mode using the mouse and click the  button in the quick setting toolbar.

Note: In the instant playback mode, only record files recorded during the last five minutes on this channel will be played back.



Figure 6.1 Instant Playback Interface

● **OPTION 2:**

1. Enter the Playback interface.

Mouse: right click a channel in live view mode and select Playback from the menu, as shown in Figure 6.2.

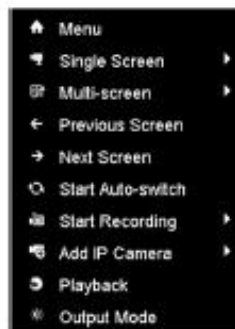


Figure 6.2 Right-click Menu under Live View

Under multi-screen live view mode, the recorded files of the top-left channel will be played back.

Note: Pressing numerical buttons will switch playback to the corresponding channels during playback process.

2. Playback management.

The toolbar in the bottom part of Playback interface can be used to control playing progress, as shown in Figure 6. 3.



Figure 6. 3 Playback Interface

Click the channel(s) to execute simultaneous playback of multiple channels.



Figure 6. 4 Toolbar of Playback

Note: The **11-09-2012 11:38:28 -- 11-30-2012 09:05:47** indicates the start/end time of the record.

Table 6. 1 Detailed Explanation of Playback Toolbar

Button	Operation	Button	Operation	Button	Operation	Button	Operation
	Audio on/ Mute		Start/Stop clipping		30s forward		30s reverse
	Add default tag		Add customized tag		Tag management		Speed down
	Pause reverse play/ Reverse play/ Single-frame reverse play		Pause play/ Play/ Single-frame play		Scaling up/down the time line		Speed up
	Previous day		Next day		Full Screen		Exit
	Stop		Digital Zoom		Smart Search		Video type
	Process bar						

Note: Playback progress bar: use the mouse to click any point of the progress bar or drag the progress bar to locate special frames.

6.1.2 Playing Back by Time

Purpose:


Play back video files recorded in specified time duration. Multi-channel simultaneous playback and channel switch are supported.


Steps:

1. Enter playback interface.
Menu>Playback
2. Check the checkbox of channel(s) in the channel list and then double-click to select a date on the calendar.



Figure 6. 5 Playback Calendar

Note: If there are record files for that camera in that day, in the calendar, the icon for that day is displayed as .

Otherwise it is displayed as .

In the Playback interface:

The toolbar in the bottom part of Playback interface can be used to control playing process, as shown in Figure 6. 6.



Figure 6. 6 Interface of Playback by Time



Figure 6. 7 Toolbar of Playback by Time

7.1.1 Quick Export

Purpose:

Export record files to backup device(s) quickly.

Steps:

1. Enter Video Export interface.

Menu>Export>Normal

Choose the channel(s) you want to back up and click **Quick Export** button.

Note:

- 1) The time duration of record files on a specified channel cannot exceed one day. Otherwise, the message box “Max. 24 hours are allowed for quick export.” will pop up.
- 2) The number of channels for synchronous export cannot exceed 4. Otherwise, the message box “Max. 4 channels are allowed for synchronous quick export.” will pop up.

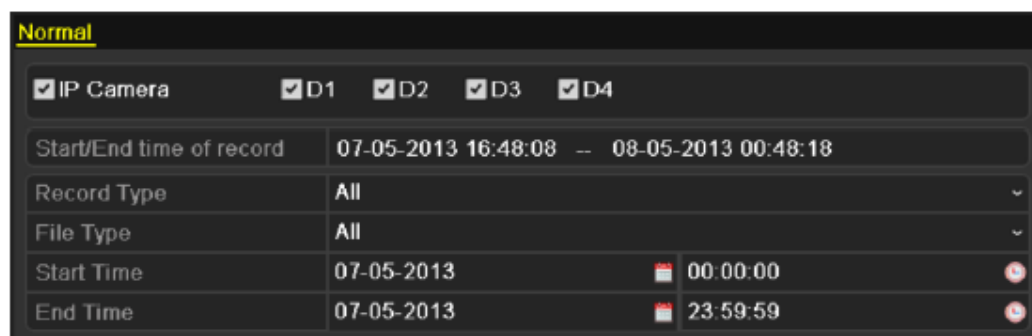


Figure 7. 1 Quick Export Interface

2. Click the **Export** button to start exporting.

Note: Here we use USB Flash Drive and please refer to the next section Normal Backup for more backup devices supported by the device.

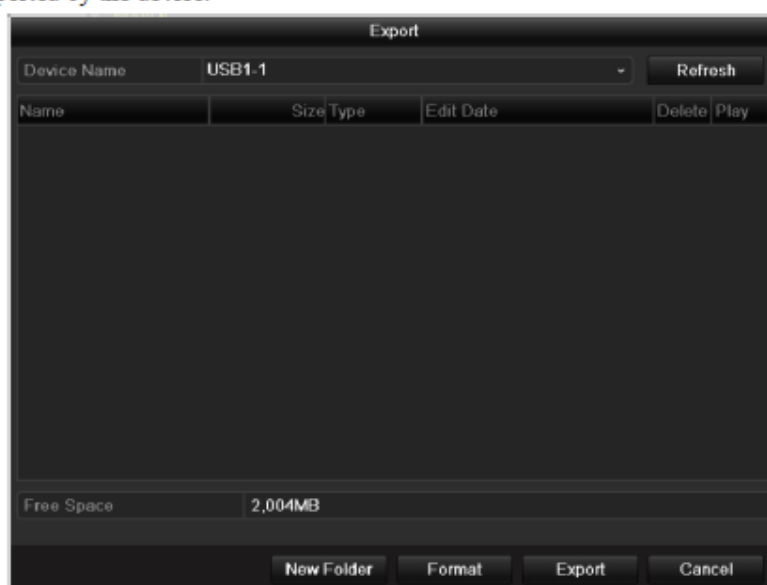


Figure 7. 2 Quick Export using USB1-1

Stay in the Exporting interface until all record files are exported.

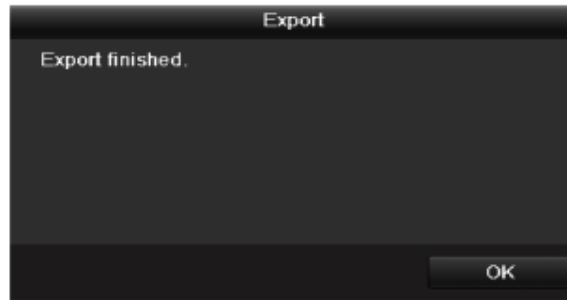



Figure 7.3 Export Finished

3. Check backup result.

Choose the record file in Export interface and click button  to check it.

Note: The Player player.exe will be exported automatically during record file export.

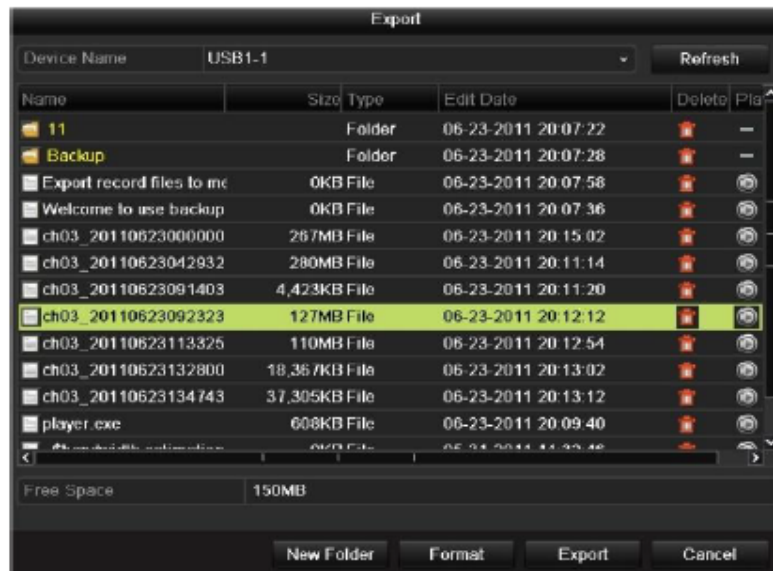


Figure 7.4 Checkup of Quick Export Result Using USB1-1

7.1.2 Backing up by Normal Video Search

Purpose:

The record files can be backup to various devices, such as USB devices (USB flash drives, USB HDDs, USB writer), and SATA writer.

Backup using USB flash drives and USB HDDs

Steps:

1. Enter Export interface.
Menu>Export>Normal
2. Set search condition and click Search button to enter the search result interface.



Figure 7. 5 Normal Video Search for Backup

3. Select record files you want to back up.

Click to play the record file if you want to check it.

Check the checkbox before the record files you want to back up.

Note: The size of the currently selected files is displayed in the lower-left corner of the window.



Figure 7. 6 Result of Normal Video Search for Backup

4. Export.

Click **Export** button and start backup.

Note: If the inserted USB device is not recognized:

- Click the **Refresh** button.
- Reconnect device.
- Check for compatibility from vendor.

You can also format USB flash drives or USB HDDs via the device.

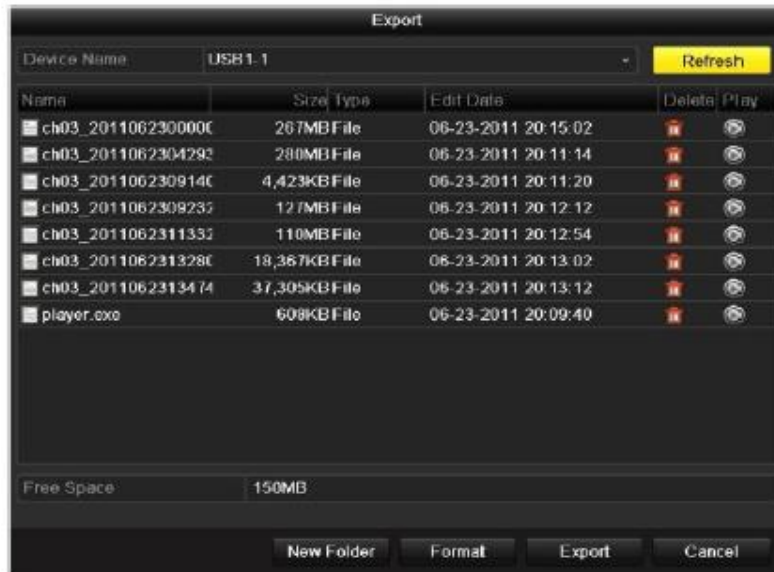



Figure 7.7 Export by Normal Video Search using USB Flash Drive

Stay in the Exporting interface until all record files are exported with pop-up message box “Export finished”.



Figure 7.8 Export Finished

5. Check backup result.

Choose the record file in Export interface and click button  to check it.

Note: The Player player.exe will be exported automatically during record file export.

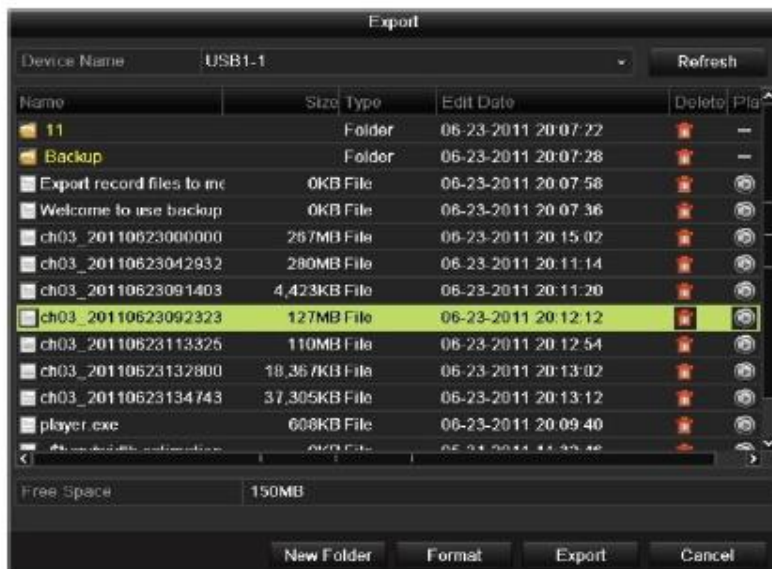


Figure 7.9 Checkup of Export Result using USB Flash Drive